



For Lease

West Portal

Office Space at the St Francis
Circle Professional Center

Jay Pon
415.701.2636
jpon@jps.net

Mark McNee
415.701.2637
mark@mcnee.us

Facsimile: 415.701.2686

380 West Portal Avenue

(Between 14th Avenue and 15th Avenue)

Available: Approximately 1,600 square feet
(Per Owner)

- Ground floor professional office suite
- Five private offices
- Open area for reception and/or workstations
- Features a kitchenette, restroom, and closet space
- Light rail access to downtown

Price: \$2.90 per square foot per month, modified gross

Term: 3+ years

Levi's Plaza-Van Ness Corridor



PARAGON
REAL ESTATE GROUP

www.SFrealstate.com

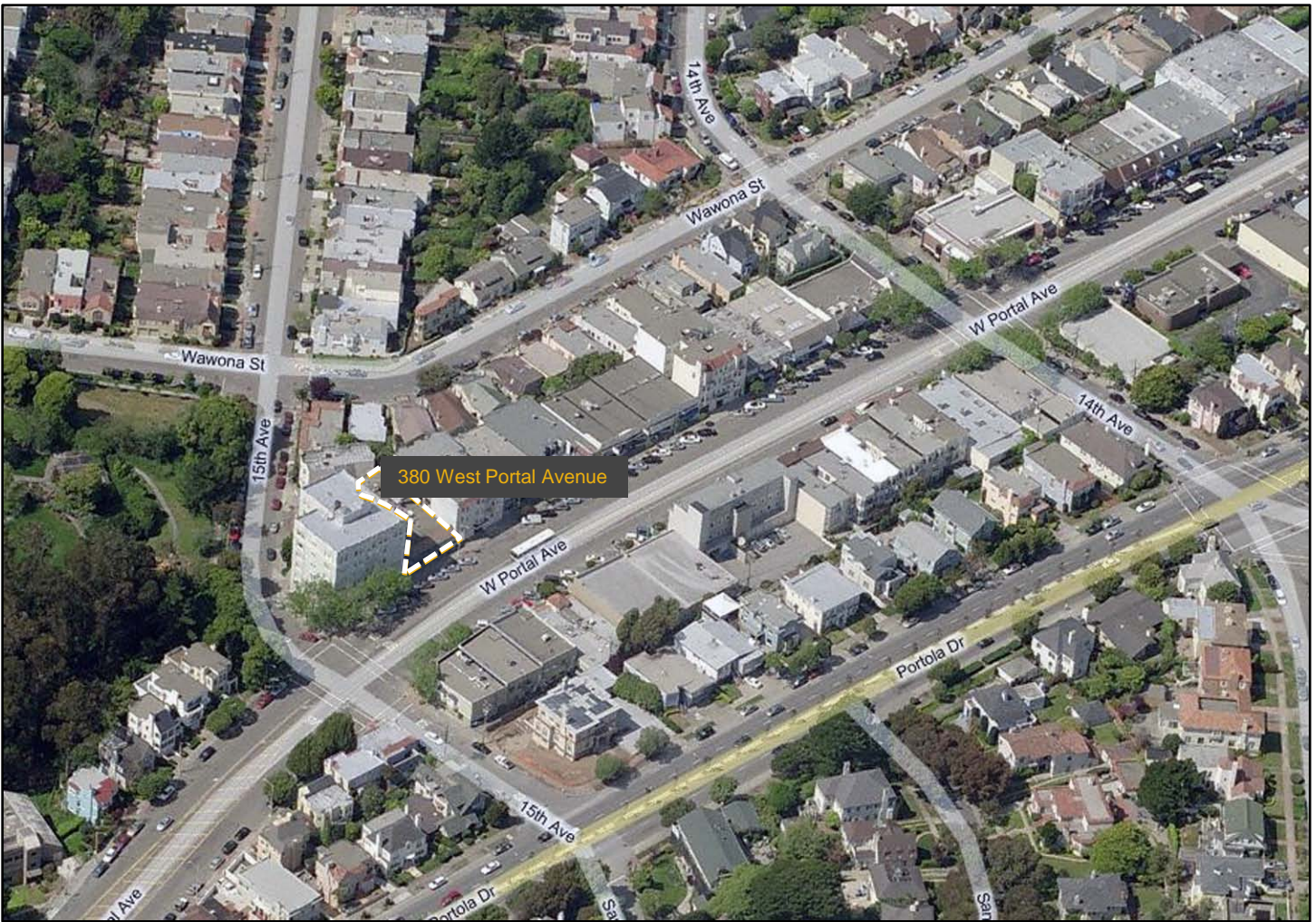
The information contained herein has been obtained from sources we deem reliable but is not guaranteed. Prospective purchasers and/or tenants are advised to independently verify accuracy and to review any disclosure information on file with this office. This property statement is dated April 9, 2010 and replaces any previously dated or undated version. Information on this statement changes periodically; Prospective purchasers and/or tenants are advised to contact our office to ensure they have the most current property statement. Square footage should be verified by purchaser and/or tenant using qualified professionals. To be removed from our distribution list call 415.701.2636. Paragon Real Estate Group DRE# 01443761; Jay Pon DRE# 01203843; Mark McNee DRE# 01464307.



Interior of property, facing southwest



Kitchenette



Levi's Plaza-Van Ness Corridor



PARAGON
REAL ESTATE GROUP

www.SFrealstate.com

The information contained herein has been obtained from sources we deem reliable but is not guaranteed. Prospective purchasers and/or tenants are advised to independently verify accuracy and to review any disclosure information on file with this office. This property statement is dated April 9, 2010 and replaces any previously dated or undated version. Information on this statement changes periodically; Prospective purchasers and/or tenants are advised to contact our office to ensure they have the most current property statement. Square footage should be verified by purchaser and/or tenant using qualified professionals. To be removed from our distribution list call 415.701.2636. Paragon Real Estate Group DRE# 01443761; Jay Pon DRE# 01203843; Mark McNee DRE# 01464307.