



## For Sale or Lease

Van Ness Corridor

Commercial Condominium

Jay Pon  
415.701.2636  
[jpon@jps.net](mailto:jpon@jps.net)

Mark McNee  
415.701.2637  
[mark@mcnee.us](mailto:mark@mcnee.us)

*Facsimile:* 415.701.2686

### 1452-A Bush St (Between Van Ness Ave and Polk St)

**Available:** Approximately 885 square feet (Per Condo map)

**Zoning:** RC-4, Van Ness Special Use District

- Ground floor commercial condominium
- Sprinklers, utility sink, lighting, and concrete floors
- Parking lots nearby; Close to MUNI and Golden Gate Transit
- One restroom in suite

#### **For Sale:**

**Price:** \$350,000

#### **For Lease:**

**Price:** Negotiable

**Term:** 3+ years

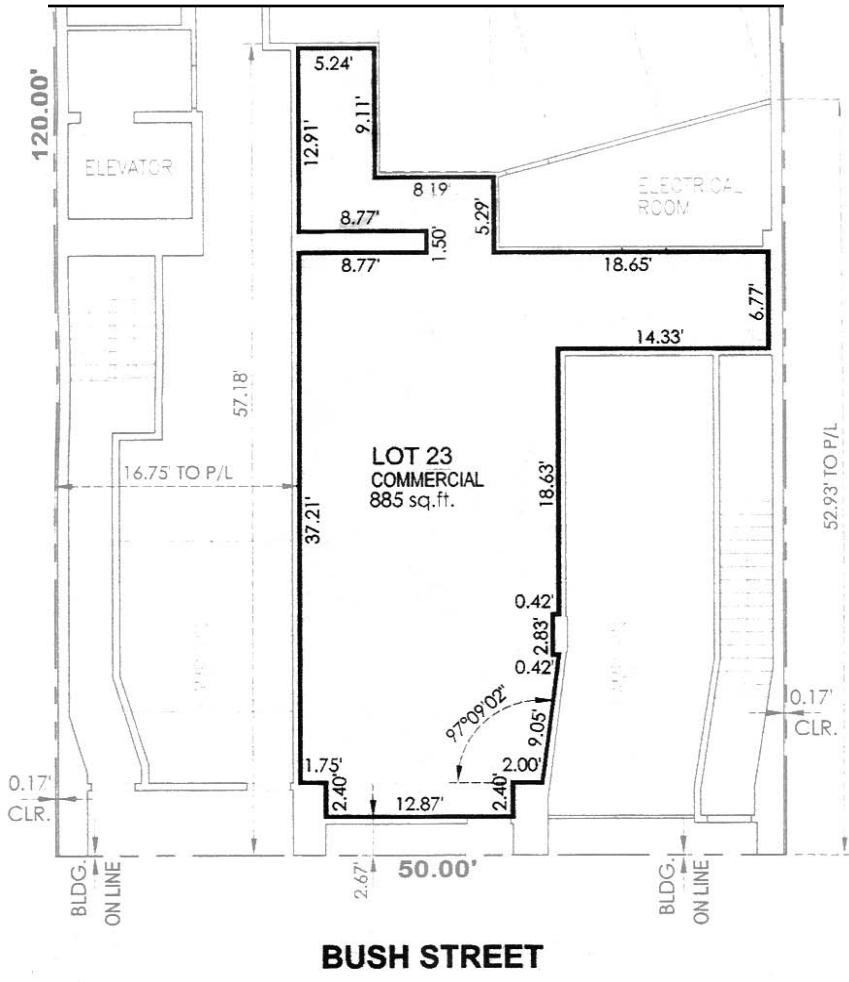
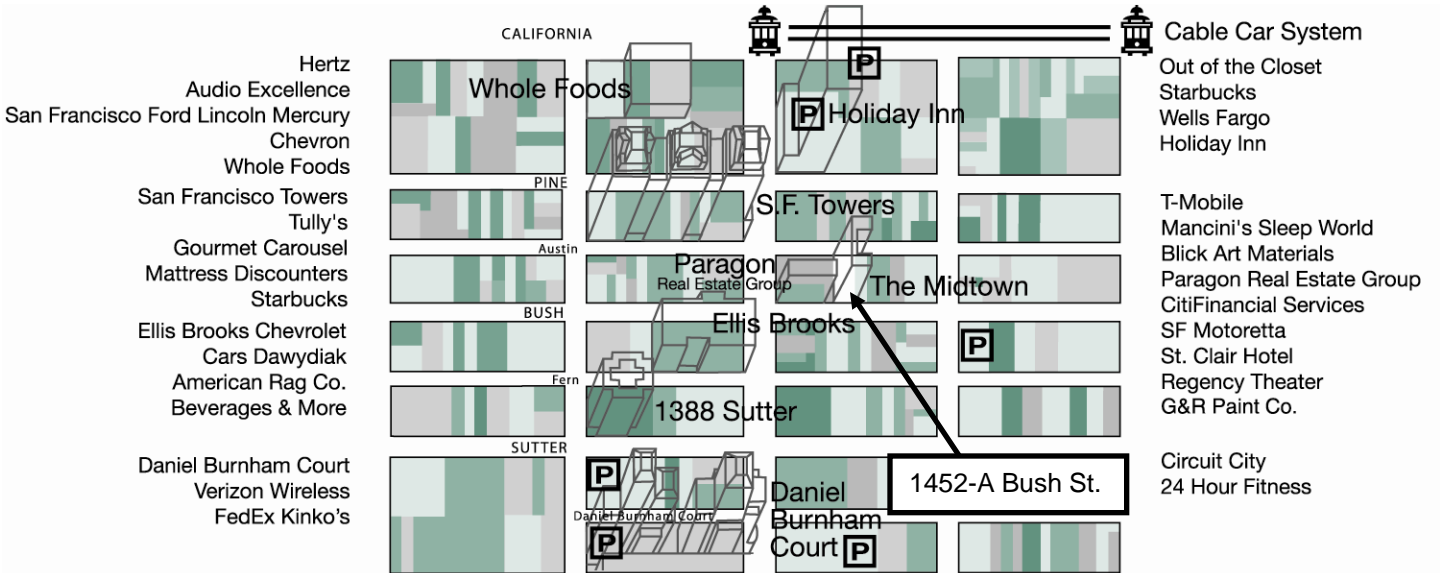
Levi's Plaza - Van Ness Corridor



**PARAGON**  
REAL ESTATE GROUP

[www.SFrealstate.com](http://www.SFrealstate.com)

The information contained herein has been obtained from sources we deem reliable but is not guaranteed. Prospective purchasers and/or tenants are advised to independently verify accuracy and to review any disclosure information on file with this office. This property statement is dated May 4, 2010 and replaces any previously dated or undated version. Information on this statement changes periodically; Prospective purchasers and/or tenants are advised to contact our office to ensure they have the most current property statement. Square footage should be verified by purchaser and/or tenant using qualified professionals. To be removed from our distribution list call 415.701.2636. Paragon Real Estate Group DRE# 01443761; Jay Pon DRE# 01203843; Mark McNee DRE# 01464307.



Levi's Plaza - Van Ness Corridor

 **PARAGON**  
 REAL ESTATE GROUP

www.SFrealstate.com

The information contained herein has been obtained from sources we deem reliable but is not guaranteed. Prospective purchasers and/or tenants are advised to independently verify accuracy and to review any disclosure information on file with this office. This property statement is dated May 4, 2010 and replaces any previously dated or undated version. Information on this statement changes periodically; Prospective purchasers and/or tenants are advised to contact our office to ensure they have the most current property statement. Square footage should be verified by purchaser and/or tenant using qualified professionals. To be removed from our distribution list call 415.701.2636. Paragon Real Estate Group DRE# 01443761; Jay Pon DRE# 01203843; Mark McNee DRE# 01464307.