



## For Lease

Inner Richmond

Second Floor Office Suites

Jay Pon

415.701.2636

[jpon@jps.net](mailto:jpon@jps.net)

Mark McNee

415.701.2637

[mark@mcnee.us](mailto:mark@mcnee.us)

*Facsimile:* 415.701.2686

**3900 Geary Blvd** (NW Corner of 3rd Avenue)

*Available:* **Suite 201:** Approximately 1,041 square feet\*  
Corner suite with two private offices

**Suite 202:** Approximately 416 square feet\*  
Open floor plan

- High ceilings; Abundant natural light
- Easy access to public transportation
- Building constructed in 1988
- Units can be combined to create 1,457 square feet\*
- Owner pays for electricity, water and garbage services

*Term:* Negotiable

*\*Per Owner*

*Price:* \$2.50 per square foot per month

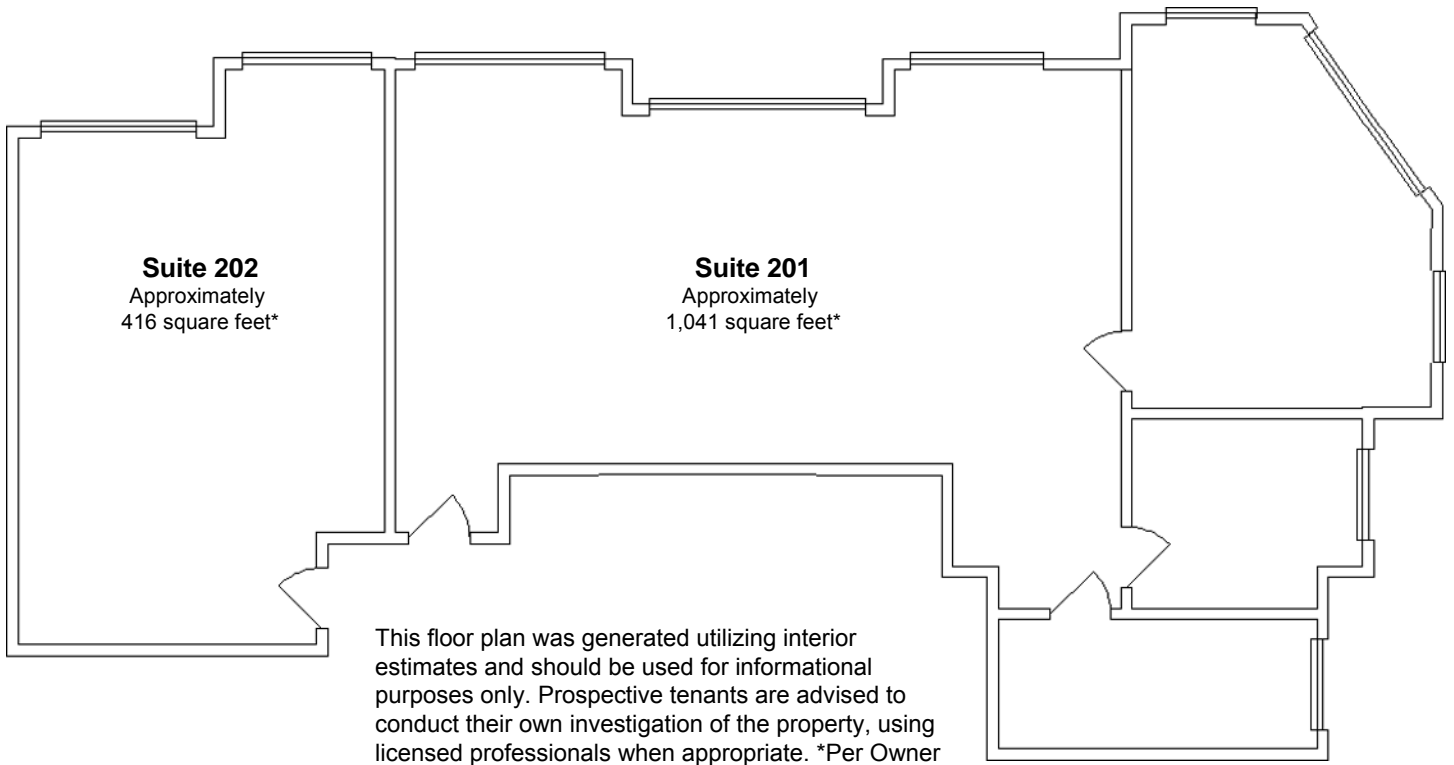
Levi's Plaza-Van Ness Corridor



**PARAGON**  
REAL ESTATE GROUP

[www.SFrealstate.com](http://www.SFrealstate.com)

The information contained herein has been obtained from sources we deem reliable but is not guaranteed. Prospective purchasers/tenants are advised to independently verify accuracy and to review any disclosure information on file with this office. This property statement is dated 12/1/2009 and replaces any previously dated or undated version. Information on this statement changes periodically; Prospective purchasers/tenants are advised to contact our office to ensure they have the most current property statement. Square footage should be verified by purchaser/tenant using qualified professionals. To be removed from our distribution list call 415-701-2636.



Levi's Plaza - Van Ness Corridor



**PARAGON**  
REAL ESTATE GROUP

[www.SFrealstate.com](http://www.SFrealstate.com)

The information contained herein has been obtained from sources we deem reliable but is not guaranteed. Prospective purchasers/tenants are advised to independently verify accuracy and to review any disclosure information on file with this office. This property statement is dated 12/1/2009 and replaces any previously dated or undated version. Information on this statement changes periodically; Prospective purchasers/tenants are advised to contact our office to ensure they have the most current property statement. Square footage should be verified by purchaser/tenant using qualified professionals. To be removed from our distribution list call 415-701-2636.