



THE | A | R | T | A | N | I |
SAN FRANCISCO

*Brand New Retail
Condominiums*
For Sale

Van Ness Corridor

Jay Pon
415.701.2636
jpon@jps.net

Mark McNee
415.701.2637
mark@mcnee.us

Facsimile: 415.701.2686

810 and 826 Van Ness Ave (Between Ellis St and Eddy St)

810 Van Ness Ave:

APN: 0739-018
High ceilings; 1,251 SF*
Asking Price: \$409,000

826 Van Ness Ave:

APN#: 0739-017
Corner location; 1,097 SF*
Asking Price: \$409,000

- Two ground floor commercial condominiums in a 52 unit, eight story building built in year 2009; Immediate occupancy
- Ideal for owner/user SBA loan
- High traffic count; Good foot traffic; Excellent visibility
- Near SF Opera, SF Symphony, Civic Center, Courthouses
- Convenient to public transportation

Zoning: RC-4, Van Ness Special Use District

*Per condominium map dated August 2008.

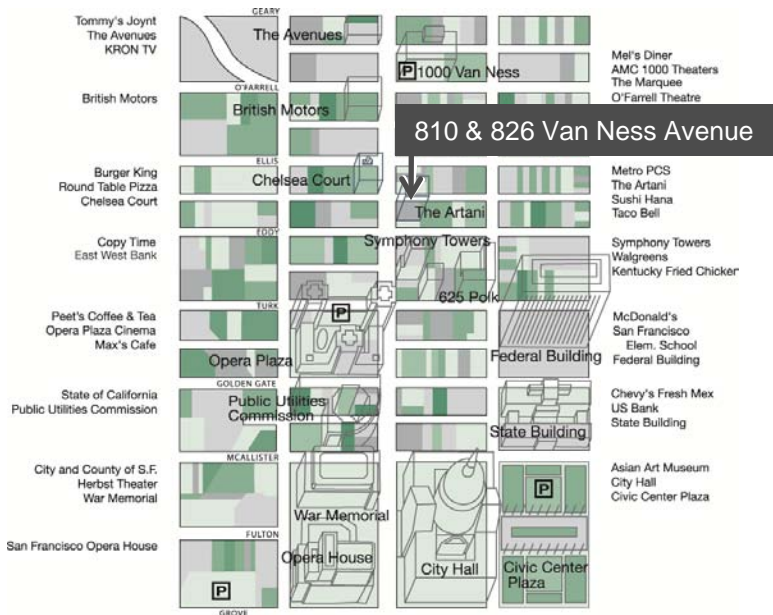
Levi's Plaza - Van Ness Corridor



PARAGON
REAL ESTATE GROUP

www.SFrealstate.com

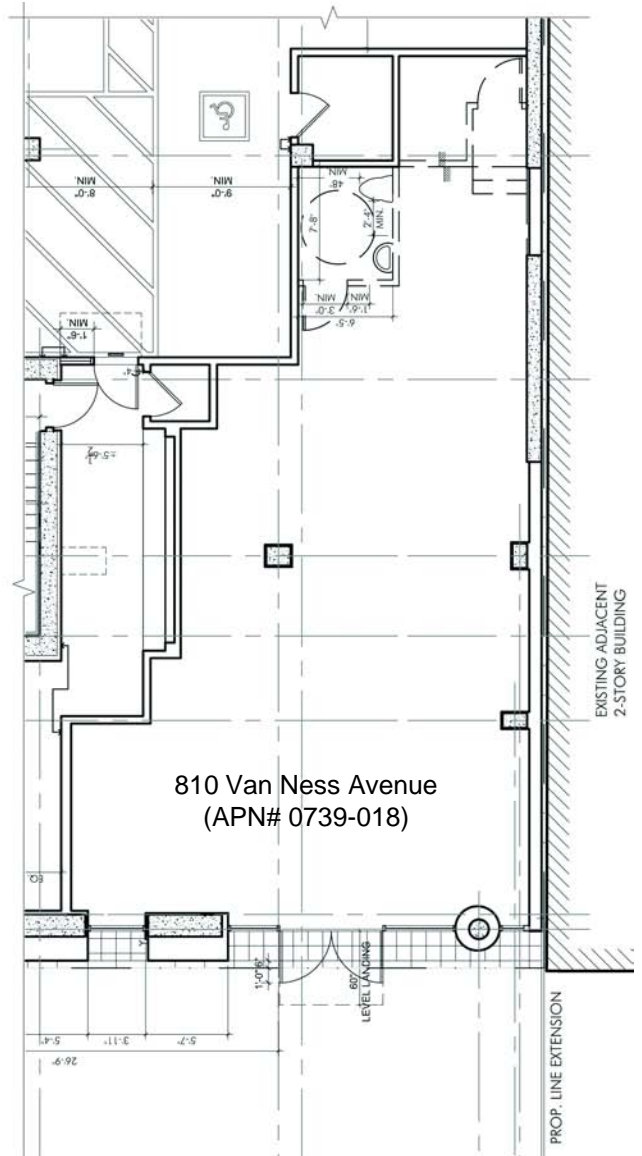
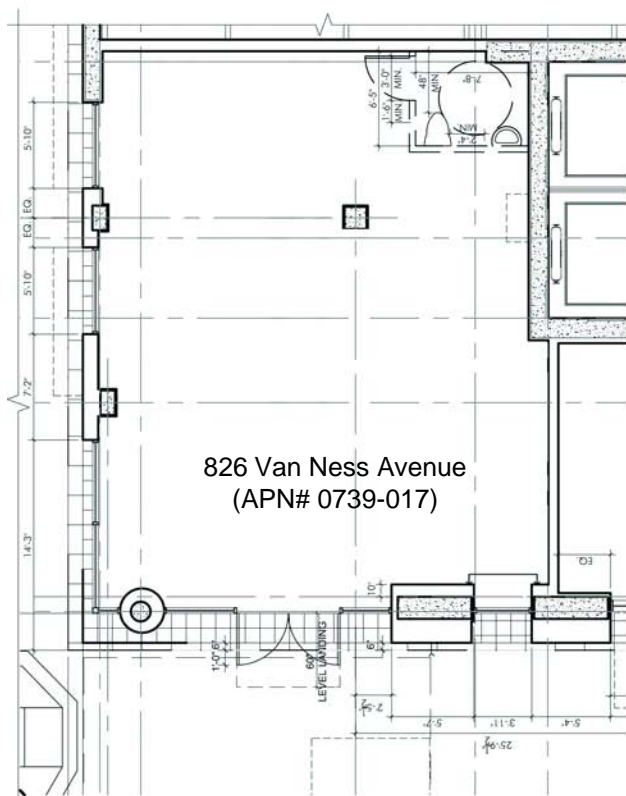
The information contained herein has been obtained from sources we deem reliable but is not guaranteed. Prospective purchasers and/or tenants are advised to independently verify accuracy and to review any disclosure information on file with this office. This property statement is dated February 21, 2011 and replaces any previously dated or undated version. Information on this statement changes periodically; Prospective purchasers and/or tenants are advised to contact our office to ensure they have the most current property statement. Square footage should be verified by purchaser and/or tenant using qualified professionals. To be removed from our distribution list call 415.701.2636. Paragon Real Estate Group DRE# 01443761; Jay Pon DRE# 01203843; Mark McNee DRE# 01464307.



Web Users

Click Here for a Sample SBA 504 Loan Rate Sheet

*Bank and SBA Rate and Terms Continually Change
Data as of 2.21.2011*



Levi's Plaza - Van Ness Corridor

PARAGON
REAL ESTATE GROUP

www.SFrealstate.com

The information contained herein has been obtained from sources we deem reliable but is not guaranteed. Prospective purchasers and/or tenants are advised to independently verify accuracy and to review any disclosure information on file with this office. This property statement is dated February 21, 2011 and replaces any previously dated or undated version. Information on this statement changes periodically; Prospective purchasers and/or tenants are advised to contact our office to ensure they have the most current property statement. Square footage should be verified by purchaser and/or tenant using qualified professionals. To be removed from our distribution list call 415.701.2636. Paragon Real Estate Group DRE# 01443761; Jay Pon DRE# 01203843; Mark McNee DRE# 01464307.