



## For Lease

Mission District  
Retail Space

Jay Pon  
415.701.2636  
[jpon@jps.net](mailto:jpon@jps.net)

Mark McNee  
415.701.2637  
[mark@mcnee.us](mailto:mark@mcnee.us)

*Facsimile:* 415.701.2686

**3000 16th Street** (At Mission Street)

*Available:* **Ground Floor:** Approximately 1,796 square feet  
**Lower Level:** **Approximately 2,723 square feet**  
**Total:** Approximately 4,519 square feet

*Zoning:* NC-3 (Moderate-Scale Neighborhood Commercial District)

- Prime corner retail space
- High visibility blade signage available
- 16th Station is directly across the street and services BART and SF MUNI (14, 14L, 22, 33, 49 and 53 lines)
- Previous tenant was a financial institution
- High foot traffic and vehicle count

*Term:* 5-10 years

*Price:* \$5,495 per month, industrial gross

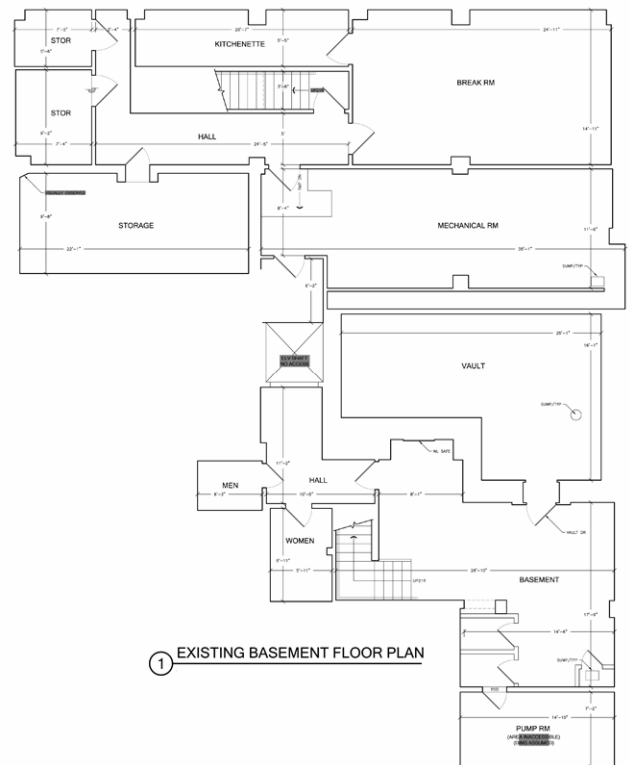
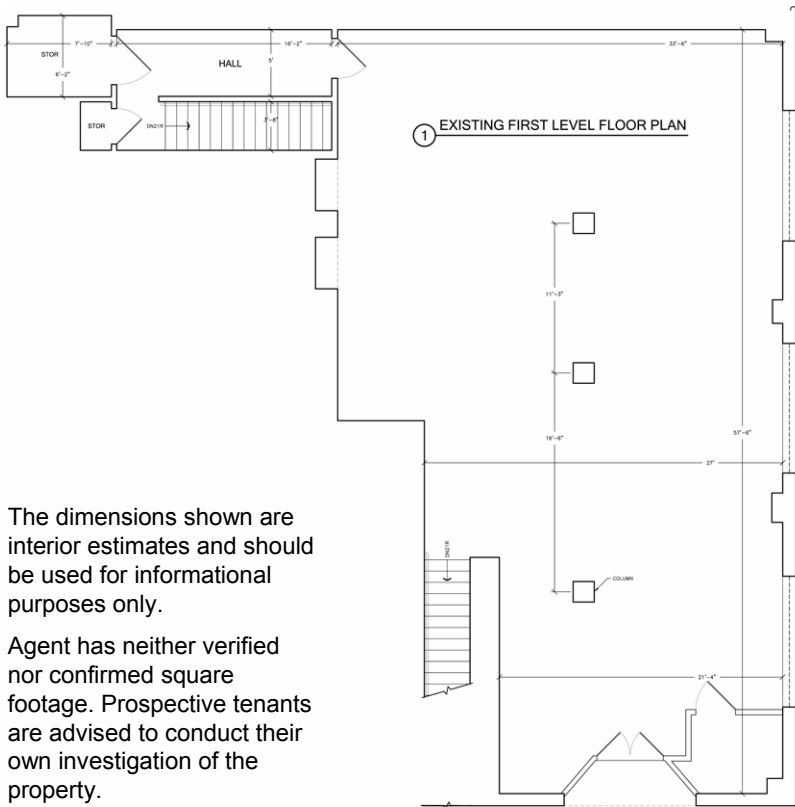
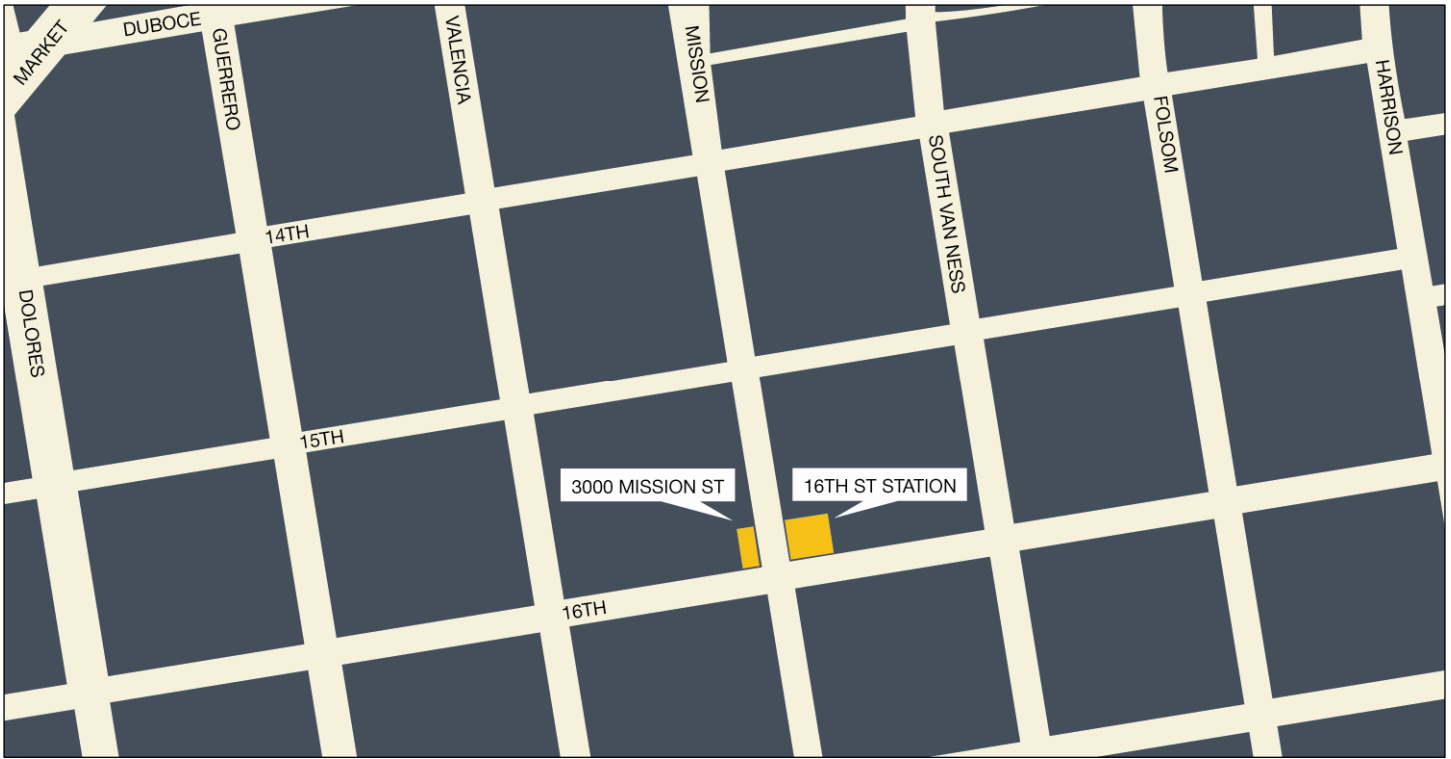
Levi's Plaza-Civic Center



**PARAGON**  
REAL ESTATE GROUP

[www.SFrealstate.com](http://www.SFrealstate.com)

The information contained herein has been obtained from sources we deem reliable but is not guaranteed. Prospective purchasers/tenants are advised to independently verify accuracy and to review any disclosure information on file with this office. This property statement is dated 3/29/2007 and replaces any previously dated or undated version. Information on this statement changes periodically; Prospective purchasers/tenants are advised to contact our office to ensure they have the most current property statement. Square footage should be verified by purchaser/tenant using qualified professionals. To be removed from our distribution list call 415-701-2636.



The dimensions shown are interior estimates and should be used for informational purposes only.

Agent has neither verified nor confirmed square footage. Prospective tenants are advised to conduct their own investigation of the property.

Levi's Plaza-Civic Center



**PARAGON**  
REAL ESTATE GROUP

[www.SFrealstate.com](http://www.SFrealstate.com)

The information contained herein has been obtained from sources we deem reliable but is not guaranteed. Prospective purchasers/tenants are advised to independently verify accuracy and to review any disclosure information on file with this office. This property statement is dated 3/29/2007 and replaces any previously dated or undated version. Information on this statement changes periodically; Prospective purchasers/tenants are advised to contact our office to ensure they have the most current property statement. Square footage should be verified by purchaser/tenant using qualified professionals. To be removed from our distribution list call 415-701-2636.